



## Orchid Features and Amenities

### LIVING AREA

Wall-to-wall carpeting and 8lb. pad  
Spacious hallways  
Two panel interior doors  
Designer light fixtures  
Ceiling fan with light kit in Great Room  
Brushed nickel lever door handles and locksets  
Flex Room with Office/Bedroom #3 option  
5.25" Baseboards and 3.25" casing throughout  
Pre-wired for television and data in Great Room  
Universal design features

### KITCHEN

Granite slab countertops  
Luxury vinyl plank flooring  
Shaker hardwood cabinetry with bar pulls and color choices  
Pendant lighting over Kitchen island  
Stainless steel appliances  
Freestanding induction range  
Undercabinet hood above Range  
Built in microwave  
Energy Star® dishwasher  
Stainless steel under-mount Kitchen sink  
Pull-down faucet  
Garbage disposal  
Pre-plumbed for refrigerator ice maker  
Pre-wired for telephone

### OWNER'S SUITE

Ceiling fan with light kit  
Walk-in closet with custom shelving  
Wall-to-wall carpeting and 8lb. pad  
Pre-wired for telephone, television and data

### OWNER'S BATHROOM

Optional Bathroom entry door  
Tiled roll-in shower with built in shower seat and niche  
Dual porcelain undermount ceramic sinks with widespread stainless faucets  
Granite slab countertop at comfort height  
Comfortable elongated toilet  
Pre-installed backing for grab bars in Toilet Room and shower  
Designer tile flooring  
Shaker hardwood cabinetry with bar pulls and color choices

### BEDROOM

Walk-in closet in Bedroom #2  
Wall to wall carpeting and 8lb. pad

### BATHROOM

Granite slab countertop  
Porcelain ceramic top mount sink with brushed nickel faucet  
Shower pan with tiled surround  
Shaker hardwood cabinetry with bar pulls and color choices  
Luxury vinyl plank flooring  
Comfortable elongated toilets

### LAUNDRY

Pre-plumbed for washer and dryer  
Electrical outlet for dryer  
Laundry Room Sink with pull-out faucet  
Luxury vinyl plank flooring  
Shaker hardwood cabinets above washer and dryer area  
Additional hardwood cabinets with granite countertop

### GARAGE

Taped garage interior  
Sectional roll up door with windows  
Automatic door openers with remote and WiFi capability  
Side yard access door

### EXTERIOR

Stone accents on select elevations  
Flat tile Shingles  
Broom-finish concrete walkways and driveway  
Exterior lights at entry and garage  
Lighted address panel and doorbell  
Full side and rear yard fencing with service gate  
Front yard landscaping with automatic irrigation system  
Smart weather sensitive irrigation controller

### COMFORT, EFFICIENCY AND SAFETY

Low threshold, extra wide entry  
High efficiency home with WiFi capabilities  
Radius corners on all walls and at windows  
Vinyl dual pane windows and sliding glass doors  
Insulation in ceilings and exterior walls  
LED lighting  
Efficient air handler and heat pump  
Complete fire sprinkler system  
Smoke/carbon monoxide detectors  
Enrolled in SMUD SolarShares® program

### Options & Upgrades\*

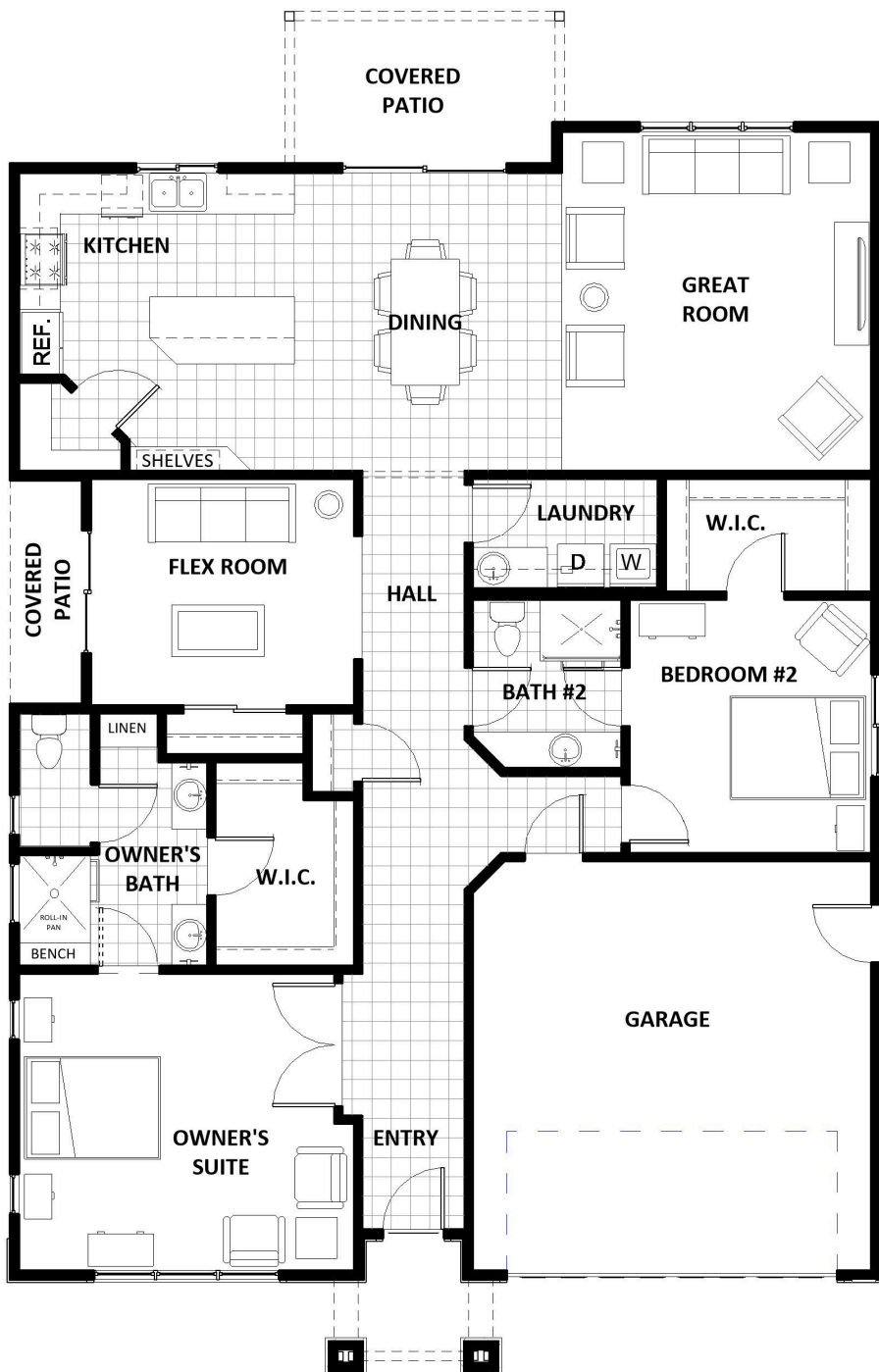
Kitchen appliance upgrade package | Granite and tile area and color upgrades | Cabinet hardware options | Additional ceiling fan upgrade | Additional concrete options  
\*Options and upgrades availability and cost vary by plan, elevation, lot and construction stage. They may require payment of an additional deposit and may have selection deadlines. Ask Listing Agent for pricing, availability and other details.

Riverland Homes, Inc. reserves the right to substitute or change without notice equipment, materials, appliances, features and amenities.



# DRY CREEK OAKS

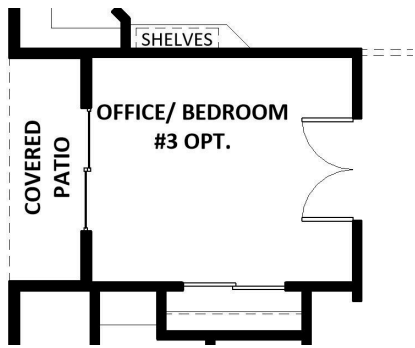
BY RIVERLAND HOMES, INC.



## Orchid

2 Bedrooms  
 2 Bathrooms  
 Open Shelving in Kitchen  
 Walk in Pantry  
 Flex Room w/Covered Patio  
 1,890 sq. ft.

Flex Room Option:



Square footages are approximate and are based on the American National Standard for Single-Family Residential Buildings developed by the National Association of Home Builders (NAHB) and approved by the American National Standards Institute (ANSI). Square footages may differ from assessor records. Prices, terms & availability subject to change without notice. Specific home features may vary. Riverland Homes reserves the right to substitute or change without notice equipment, materials, appliances, features & amenities. See listing agent for floorplan variations, options & other information.

RIVERLANDHOMES.COM | 916.347.4972